



ECONOMIC
DEVELOPMENT
COMMISSION
FLORIDA'S SPACE COAST

ANNUAL REPORT

FISCAL YEAR
22/23

(321) 638-2000 WWW.SPACECOASTEDC.ORG
ONE SMALL STEP FOR YOUR GIANT LEAP



#3, #15

**BEST PLACE TO LIVE IN
FLORIDA, U.S.**

*U.S. NEWS & WORLD
REPORT, 2023*

#10

**BEST PERFORMING
LARGE CITY IN THE
U.S.**

MILKEN INSTITUTE, 2022

#7

**BEST JOB GROWTH IN
U.S.**

MILKEN INSTITUTE, 2022

#1

**STATE FOR HIGHER
EDUCATION**

*U.S. NEWS & WORLD
REPORT, 2023*

TOP 20

**FASTEST GROWING
METROS IN THE U.S. IN
2022**

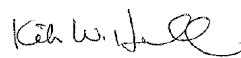
MOODY'S ANALYTICS, 2023

LAUNCHING A LEGACY

Last fiscal year, we embarked on a transformative journey and came together as a community to determine the unique qualities and attributes that distinguish our community from the rest of the world. Through Mission Space Coast, the EDC engaged with the broader community to establish the first unified community brand for Florida's Space Coast. Throughout Fiscal Year 2022/2023 we made significant progress, and are now finalizing the visualization and design phase of this pivotal project.

Mission Space Coast's efforts will result in more than just a brand. It will define the unique qualities of our combined communities under a single unified story that evokes the feelings one gets when thinking of Brevard County. This multi-year effort to unify our region under a single, compelling brand, will enhance our competitive edge on state, national, and global stages, helping to secure economic diversity and resilience for now, and future generations.

The EDC's strategic vision encompasses business environment, business development, innovation, workforce, and community of choice. Progress in each of these areas is noted within this annual report, demonstrating our continued success toward building a prosperous and sustainable future for our community. Highlights include advancements in fostering a business-friendly environment, driving project announcements, and implementing programs that address our talent pipeline needs. These efforts collectively underscore our commitment to ensuring Brevard County thrives for now, and future generations.



KIRK HALL
CHAIR OF THE BOARD



LYNDA L. WEATHERMAN
PRESIDENT & CEO



KIRK HALL
CHAIR



TRAVIS PROCTOR
CHAIR-ELECT



LINDA STOUT
TREASURER



TODD POKRYWA
SECRETARY



BART GAETJENS
IMMEDIATE PAST
CHAIR



LYNDA L. WEATHERMAN
PRESIDENT & CEO

BUSINESS ENVIRONMENT

CULTIVATE A BUSINESS-FRIENDLY ENVIRONMENT AND ADVOCATE FOR PRO-BUSINESS POLICIES AND PROGRAMS

» MAKING AN IMPACT

PATRICK SPACE FORCE BASE & CAPE CANAVERAL SPACE FORCE STATION SELECTED AS HOME OF SPACE TRAINING & READINESS COMMAND (STARCOM HQ) & SPACE DELTA 10

The EDC's notable collaboration with military leadership has established a strong foundation for effective communication and community support. The EDC is proud to have led the effort to secure our local base as the location for training our nation's Guardians for the 21st-century battlefield. This achievement reflects our strategic focus on leveraging our region's unique assets to support national defense initiatives and enhance our local economy.

» AWARD-WINNING MILITARY SUPPORT

On November 16, EDC staff and Officers hosted members of the Florida Defense Support Task Force and the Florida Defense Alliance, entities dedicated to preserving Florida's military installations. This event provided a platform for collaborative discussions and strategic planning for our local programs focused on the military community.

The EDC's Community Leaders Trip to the Pentagon was held April 26 and 27 to facilitate high-level dialogue on critical issues supporting Space Force Commands, community partnerships, and military family support. This event brought together community leaders with the Department of the Air Force and the Office of the Secretary of Defense; reinforcing our commitment to maintaining strong ties with military leadership.

» AN EVENING WITH THE FEDERAL RESERVE

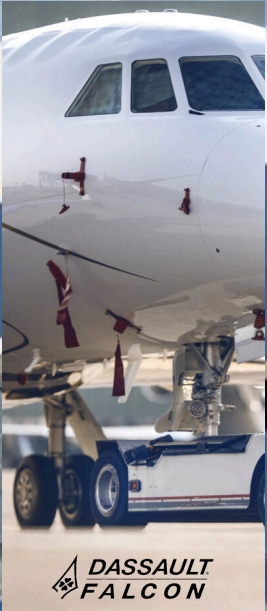
On April 20 the EDC hosted Raphael Bostic, President, Federal Reserve Bank of Atlanta. Facilitated dialogue between President Bostic and EDC President and CEO Lynda Weatherman provided attendees with insights into the impact of national monetary policy decisions on local entities. The visit also included a VIP roundtable discussion with business owners who engaged with President Bostic in a discussion on the region's economic strengths and challenges.



IMAGE: FLORIDA DEFENSE SUPPORT TASK FORCE AND THE FLORIDA DEFENSE ALLIANCE MEMBERS VISIT FLORIDA'S SPACE COAST.



IMAGE: "AN EVENING WITH THE FEDERAL RESERVE" (L) LYNDAL. WEATHERMAN, (R) RAPHAEL BOSTIC



“We extensively evaluated several areas before we found the business environment in Florida, along with its highly skilled workforce on the Space Coast, to be the perfect combination for this project.”

DASSAULT AVIATION
CHAIRMAN AND CEO,
ERIC TRAPPIER

BUSINESS DEVELOPMENT

CREATE POSITIVE ECONOMIC IMPACT BY
ATTRACTING AND RETAINING INVESTMENT WITHIN
TARGETED INDUSTRIES



THE FUTURE IS HERE

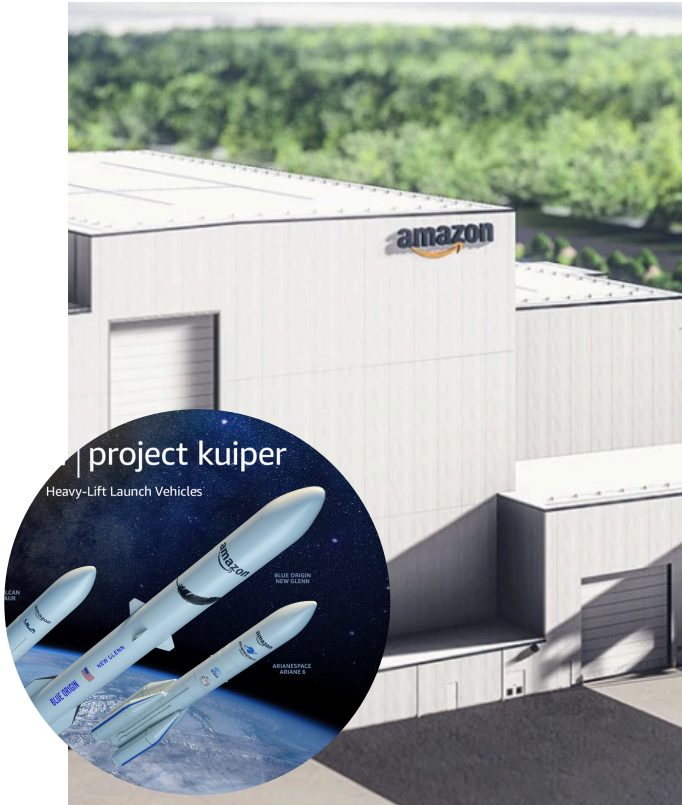


IMAGE: RENDERING, AMAZON PAYLOAD INTEGRATION & PROCESSING FACILITY

ON THE EDGE OF LIFTOFF

Florida's Space Coast, now witnessing nearly 100 annual launches, is at the forefront of the burgeoning space economy. According to Morgan Stanley's Space Team, the global space industry could exceed \$1 trillion by 2040. Our unprecedented surge in launches and commercial space activity underscores the critical role we hold within the global market.

In FY 2022/2023, the EDC announced the selection of Florida's Space Coast for **Dassault Falcon Jet's** new major maintenance facility, **Rogue Valley Microdevices Inc.'s** second U.S. microfabrication facility, and **Amazon's Project Kuiper** payload integration and processing facility.

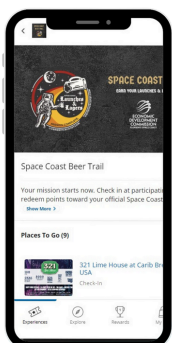
In addition, **Draper** announced it's investment in a Titusville location for a future Strategic Enhanced Ground Test Facility supporting guidance systems for U.S. Navy missiles. **This investment builds upon the success of the 2005 BRAC reversal of the Naval Ordnance Test Unit (NOTU), led by the EDC.** Since 2005, this reversal has led to the retention or attraction of over 1,500 local jobs, including Lockheed Martin's Fleet Ballistic Missile Headquarters in 2019.

These developments reflect the on-going impacts from the EDC's strategic approach to leveraging existing assets and partnerships to attract and retain key business investment.

WORKFORCE

SUPPORT AND PROMOTE A QUALIFIED WORKFORCE MEETING CURRENT AND FUTURE INDUSTRY NEEDS THROUGH TARGETED PROGRAMS AND INITIATIVES

The EDC announced **Space Coast Salutes: Military Launchpad**, a program designed to provide members of the military community with meaningful employment opportunities. Through the Military Launchpad, the EDC works to integrate military talent with the local workforce through networking opportunities and access to resources.



SPACE COAST BEER TRAIL

Launches & Lagers, the Live Big Guide to SpaceCraft Beer Pairings, has become a local mainstay and is used as a recruitment tool for companies across Florida's Space Coast. During the fiscal year, the program was expended to include the Space Coast Beer Trail digital app, providing a unique tool to educate, attract, and retain top talent to the area. To learn more, and earn a mission patch, visit LaunchesandLagers.com

DID YOU KNOW?

80% OF JOBS ARE FILLED BY REFERRALS MADE THROUGH NETWORKS.

MILITARY LAUNCHPAD

PURSUCE WHAT'S NEXT THROUGH SPACE COAST SALUTES: MILITARY LAUNCHPAD

BRIDGING THE GAP BETWEEN MILITARY SERVICE AND CIVILIAN EMPLOYMENT ON FLORIDA'S SPACE COAST.

YOUR NEXT MISSION AWAITS. VISIT MILITARY LAUNCHPAD TODAY!
SPACECOASTSALUTES.COM/MILITARY-LAUNCHPAD

SCAN ME

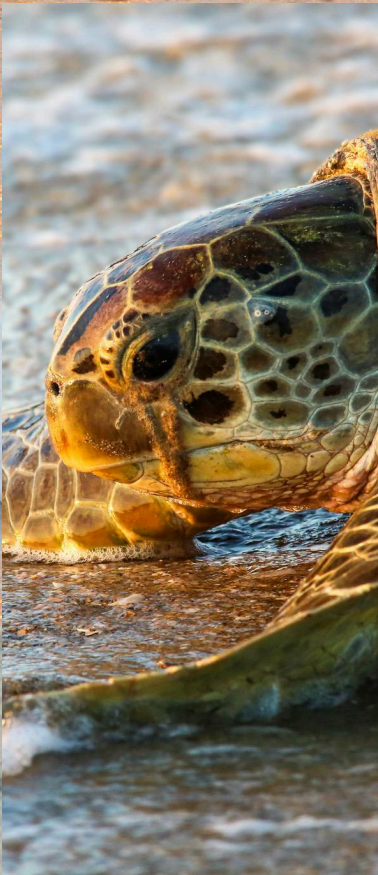
EDC
ECONOMIC DEVELOPMENT COMMISSION
FLORIDA SPACE COAST

SPACE COAST
SALUTES
ECONOMIC DEVELOPMENT COMMISSION
FLORIDA SPACE COAST

SPONSORED BY THE ECONOMIC DEVELOPMENT COMMISSION OF FLORIDA'S SPACE COAST AND THE STATE OF FLORIDA DEPARTMENT OF COMMUNITY DEVELOPMENT

COMMUNITY OF CHOICE

DISTINGUISH FLORIDA'S SPACE COAST AS THE PLACE
TO LIVE AND WORK, PARTNERING WITH
ORGANIZATIONS TO DEFINE, DEVELOP AND MARKET
COMMUNITY ASSETS



“To successfully define Florida’s Space Coast, a community that means so much to all of us, it will take community support from a variety of organizations, both private and public. Let’s define our community before someone else does. Let’s create a successful community branding campaign that is reflective of our home.”

BRETT ESROCK, CHAIR,
EDC REPORTING BOARD

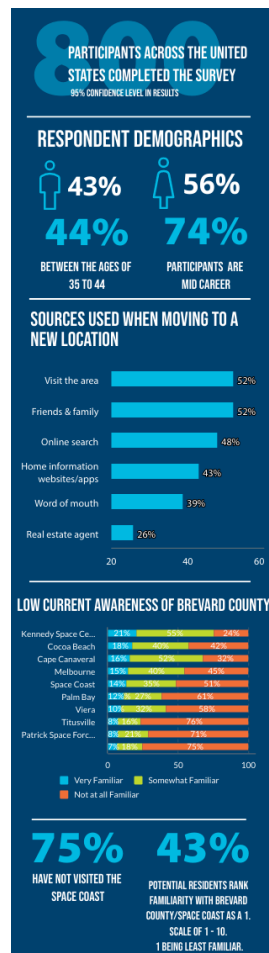
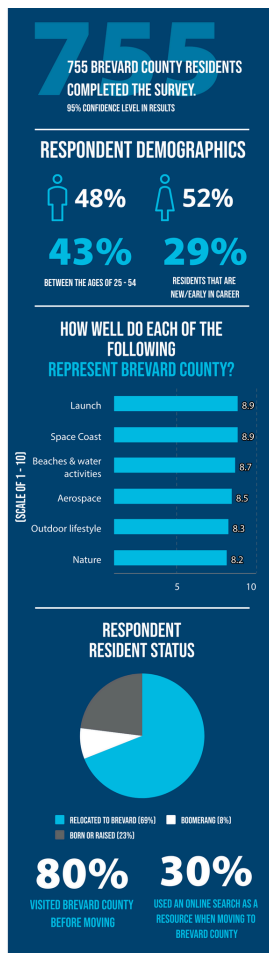
MISSION SPACE COAST
ONE VOICE - ONE BRAND





» DEFINING OUR STORY

Mission Space Coast: In Fiscal Year 2021/2022, we initiated efforts to engage with the broader community to identify the unique qualities that set our region apart. Significant progress was achieved during FY 2022/2023 as we completed the discovery phase, laying the groundwork for the subsequent visualization and design phase. This strategic effort brings us one step closer to unveiling Brevard County's official community brand story. Throughout this process, our Community of Choice Reporting Board provided valuable feedback to ensure final messages and design authentically reflect our community's quality of life, culture, and history. This collaborative approach has been instrumental in capturing the true essence of our home, preparing us to present a cohesive and compelling brand to the world.



3,166 PARTICIPANTS

40 COMMUNITY CONVERSATIONS

1,555 SURVEY RESPONSES

THE MISSION HAS JUST BEGUN...



WATCH NOW

THE EDC SETS OUT TO DEVELOP THE FIRST UNIFIED BRAND FOR BREVARD COUNTY, FLORIDA



IMAGE: A SAMPLE OF RESULTS FROM SURVEYS THROUGH MISSION SPACE COAST

EDC BOARD OF DIRECTORS FY 22/23

CHAIRMAN: Kirk Hall*

Sentry View Systems

Greg Akers

The Haskell Company

Jason Alford*

Health First, Inc.

Luther Andal

Streamline Technologies

Tim Antonition*

Space Coast Credit Union

Raul Aviles

BRPH

Kristin Bakke

LEAD Brevard

Brian Baluta*

Lockheed Martin Space

Jim Barfield*

Luke & Associates

Courtney Barker

City of Satellite Beach

Courtney Barnard*

Verizon

Kevin Barry

Rossway Island

Nancy Bartlett

Space Coast Association of REALTORS

Kim Belardinelli

TD Bank

Charles Berry, II

TotalCareIT

Leah Blackmore

Courtyard By Marriott- West Melbourne

Bonny Block

Turner Construction Group

Julie Braga

Residence Inn by Marriott Melbourne

Thomas Brandon

Brandon Development Enterprises, Inc.

Linda Brandt

Brandt Ronat + Company

Matt Brandt*

Clear Channel Outdoors

Colleen Browne*

Keiser University & Gov. / Fin. Cncl Chair

Mark Buongiorno

Tsunami Tsolutions

Kat Butler*

North American Properties

Holly Carver

Brevard County Comm'r, Rita Pritchett

Virginia Cearra

Regions Bank

Michael Cerow

At-Large Representative of All Investors

Laura Chiesman, CFP

FirstWave Financial

William Chivers

RUSH Construction Inc.

Roz Clark

Space Foundation

Jay Cochran

The Whiting-Turner Contracting Company

Carol Craig*

Sidus Space & Craig Technologies

Brian Curtin, P.E.*

BRPH

Kevin Daugherty

At-Large Representative of All Investors

Craig Day

DRB Packaging

Doug Dombroski*

City of Melbourne

Brett Esrock*

Health First, Inc.

Daniel Evans

At-Large Representative of All Investors

Tom Eye

ARES Corporation

Andrea Farmer

DNC Parks & Resorts at KSC, Inc.

Sean Farrell

City of Rockledge

Scott Fennell

Superior Skilled Trades

James Flint

Sperry CGA - Flint Brokers & Associates

Chuck Fortier

First Horizon Bank

Pamela Furr

Puzzle Box Academy

Bart Gaetjens

Immediate Past Chairman

Josiah Gattle

Brevard County Commissioner, Tom Goodson

Jennifer Glass

Coastal Mechanical Services, LLC

Deborah Goode*

Carr, Riggs and Ingram CPAs and Advisors

Michele Goodwin*

Ron Jon Surf Shop

Lloyd Gregg

ASRC Federal

Bill Guyan*

Leonardo DRS

Cheryl Hardy

Generis Collective

Gail Hart*

Acuity International, LLC

Benjamin Hayes*USN (Reserves)

The Haskell Company

Charles Heinen

JPMorgan Chase Bank, N.A.

Tom Hermansen

Ocean Partners Associates, LTD

Daniel J. Hickey*

Embraer Executive Aircraft, Inc.

Gordy Houser*

Lockheed Martin Space

Elizabeth Huy

Alluvion, Inc.

Eric Jimenez

Ardmore Roderick

Bill Johnson

Melbourne Orlando International Airport

Neal Johnson*

U.S. Bank & Chair, AVT Cncl

Cooper Jones*

Space Coast Town Center

David Jones*

Greater Palm Bay Chamber of Commerce

Teri Jones

Brevard County Commissioner, Rob Feltner

Dan Kelley

Community Credit Union of Florida

Lorna Kenna

Jacobs - COMET

Dana Kilborne*

Cypress Bank & Trust Company

Robert Kods, CCIM

Tricon Development of Brevard

Richard Kolleda, FACHE

Spherion Staffing, Inc.

David Kornick*

L3Harris Technologies

Hon. Lorraine Koss

City of Cocoa

Daniel LaMorte*

Turner Construction Group

Mica Layne*

Bank of America/Merrill Lynch

Christie Lee

United Launch Alliance

Brian Lightle*

At-Large Representative of All Investors

Megan Looby

Hedrick Brothers Construction, Inc.

Angelina Lorenzini

Regal Custom Painting, Inc.

Hon. Micah Loyd

Canaveral Port Authority

Jordan Luhn

LifeStyle Homes

Misty Marot

Medical Resource Solutions

Frank Margiotta

Eastern Florida State College

Dawn Mays*

Call One, Inc. & Hello Direct, Inc.

Melissa McGuire

LSQ

Shawn McIntyre*

North American Properties

Carla McRae*, CPA, CGMA

Berman Hopkins CPAs & Associates, LLP

Hon. Rob Medina*

City of Palm Bay

Mark Merz

Booz Allen Hamilton

Brian Mills

Maynard Nexsen

Lory Milton

Marine Bank & Trust

Steve Moga

Guardian Manufacturing, Inc.

Todd Morley

City of Cape Canaveral

Marci Murphy

CareerSource Brevard

Michele Murrell*

Florida Power & Light Co.

Hon. Jo Lynn Nelson

City of Titusville

Dean O'Neill

3N Development, Inc.

Janet Owen*

University of Central Florida

Matt Passarella

Wharton-Smith, Inc.

Christopher Pavey

SouthState Bank

Daniel Pierron

Wideman Malek, PL

Todd Pokrywa*

EDC Officer & The Viera Company

Dan Pollock

AT&T Florida

Travis Proctor*

EDC Officer & Artemis IT

Richard P. Pruss, P.E.*

Burns & McDonnell

Dina Reider-Hicks*

Waste Management, Inc. & CB Chamber

Kimberly Rezanka

Lacey Lyons Rezanka

Jim Rhinehart*

KAST Construction

Valia Rich

Valley National Bank

Michelle Riegner

DAG Architects, Inc.

Hector Rivera

Aireko Energy Solutions US, LLC

Brienne Robertson*

Titusville Area Chamber of Commerce

Jeffery T. Robison, CCIM *

Melbourne Regional Chamber of Commerce

Jacqueline Rodriguez Valdes

Acuity International

Anthony Romero

The LUXE Team at Dale Sorensen Real Estate

Hon. Hal Rose

City of West Melbourne

Joe Rowlette

Florida Health Care Plans

Corey Runte

Certified General Contractors, Inc.

Lindsey Ruschak*

Space Coast Association of REALTORS

Gilbert Russell*

At-Large Representative of All Investors

Jack Ryals*

Melbourne Orlando International Airport

Robert Salonen, MPA, CEC

Florida Tech

Sue Schmitt

W + J Construction

Natalie Sellers

Parrish Healthcare

Summit Shah*

Southeast Petro Distributors, Inc.

Sara Shell

Griffin Communications Group

Forrest Smalley

Florida City Gas

Paul Sohl,* RADM, USN Ret.

Florida High Tech Corridor

Rob Solito

JM Real Estate

Chris Sorensen

Sorensen Moving and Storage

Natasha Spencer*

Shelter Mortgage - Florida

Hon. Jason Steele*

Brevard County Board of County Comm'r

Linda Stout*

EDC Officer & Trust

Tracy Stroder, MA

EverythingBrevard.com

Jennifer Sugarman

Northrop Grumman Corporation

Rich Sutter, CPA

Brevard County Commission Office, D5

Lindsey Swindle

Christian Care Ministry

Debbie Thomas*

WELBRO Building Corporation

Stephen Thomas

Lowndes

John Timmermann*

Airbus OneWeb Satellites

Emmanuel Tormes*

The Boeing Company

David Volk

Volk Law Office, P.A.

David Wallace

BCER Engineering

Kate Wallace

Charter Communications

Abram Walton, Ph.D.*

At-Large Representative of All Investors

Bradley White*

WhiteBird

Michael Williams, Jr.*

M.H. Williams Construction Group, Inc.

Ellen Winter, Ph.D.

Brevard Zoo

Peter Woods

Meridian Property Group, LLC

Mark Wooten*

Precision Shapes, Inc.

###

HealthFirst

**BLUE
ORIGIN**



THANK YOU

TO OUR GOVERNOR LEVEL INVESTORS

ANNUAL REPORT

FISCAL YEAR 22/23



6525 3RD STREET, SUITE 304
ROCKLEDGE, FL 32955

[SPACECOASTEDC.ORG](https://spacecoastedc.org)